

# How to Update Accessory Firmware

**Step 1:** Turn on the accessory that needs updating

**Step 2:** Launch the Accessory Updater

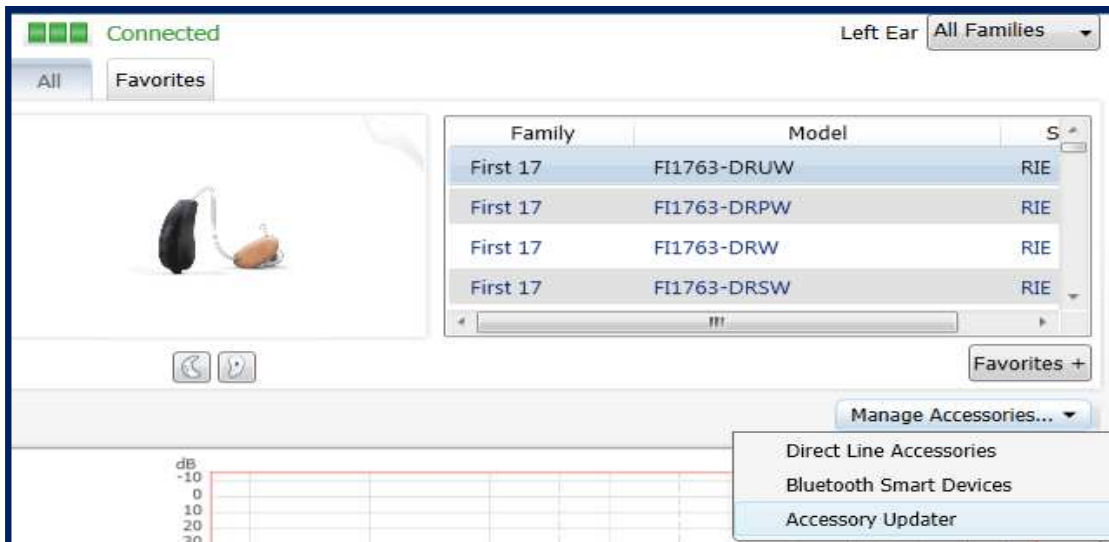
- There are four ways to launch the Accessory Updater:

1) The Beltone Direct Line Accessory Updater

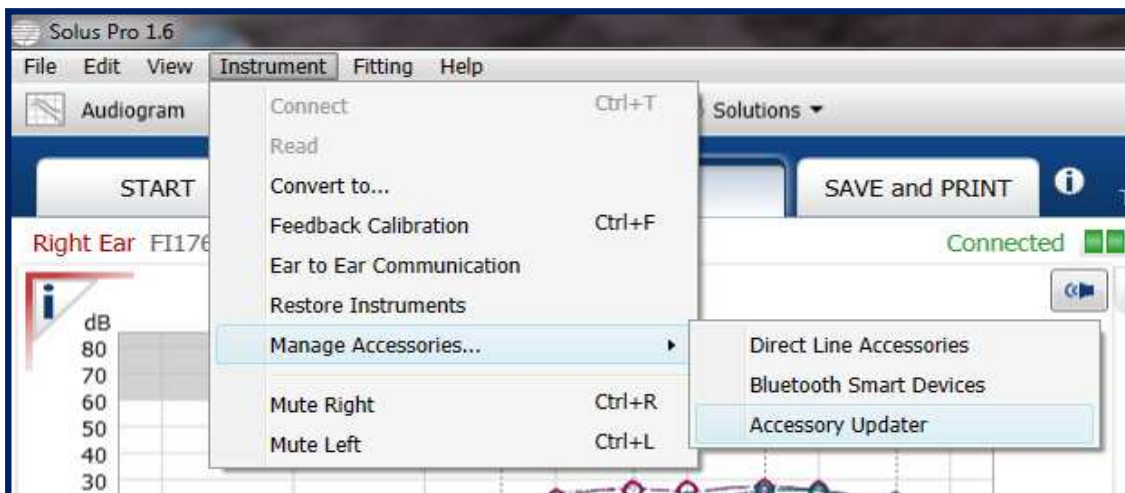


Beltone Direct  
Line Access...

2) From the Selection Screen



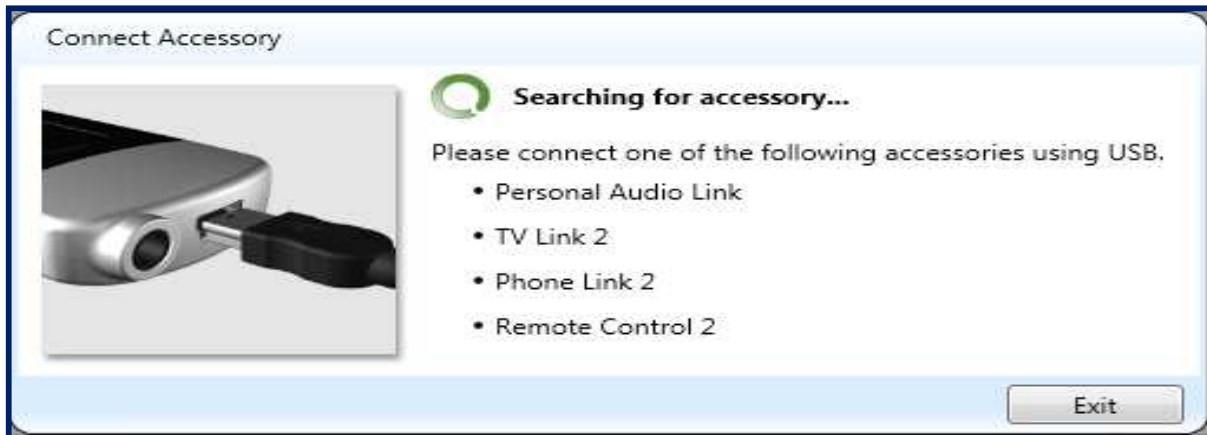
3) From the Menu Bar in any screen



4) From the Fitting Screen when in an accessory program tab



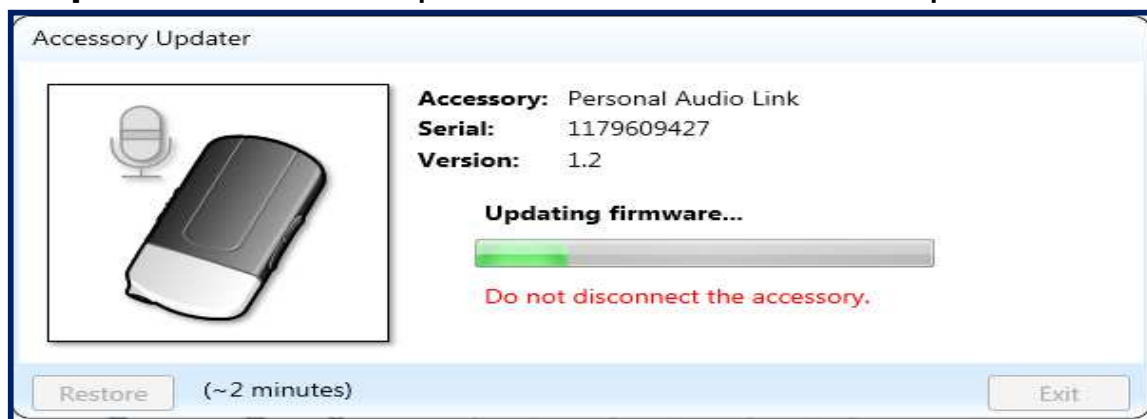
**Step 3:** Connect the accessory to the computer via a USB cable



**Step 4:** The Accessory Updater will connect to the accessory showing the update



## Step 5: Click on the update button to install the update



## Step 6: Click Exit and unplug the accessory from the computer



You can now pair the accessory to your hearing aids (you **do not** have to power the accessory off then back on). If the accessory was already paired to hearing aids, they **do not** have to be repaired.

If you're not sure if an accessory is up to date, just run through Steps 1-4. If an accessory is up to date, you will see this message window for Step 4:

